

GLUTANEX



Glow Therapy Spicule Shot 15000

For home care

Glow Therapy Spicule Shot 50000

For professional use

NOTE



GLUTANEX



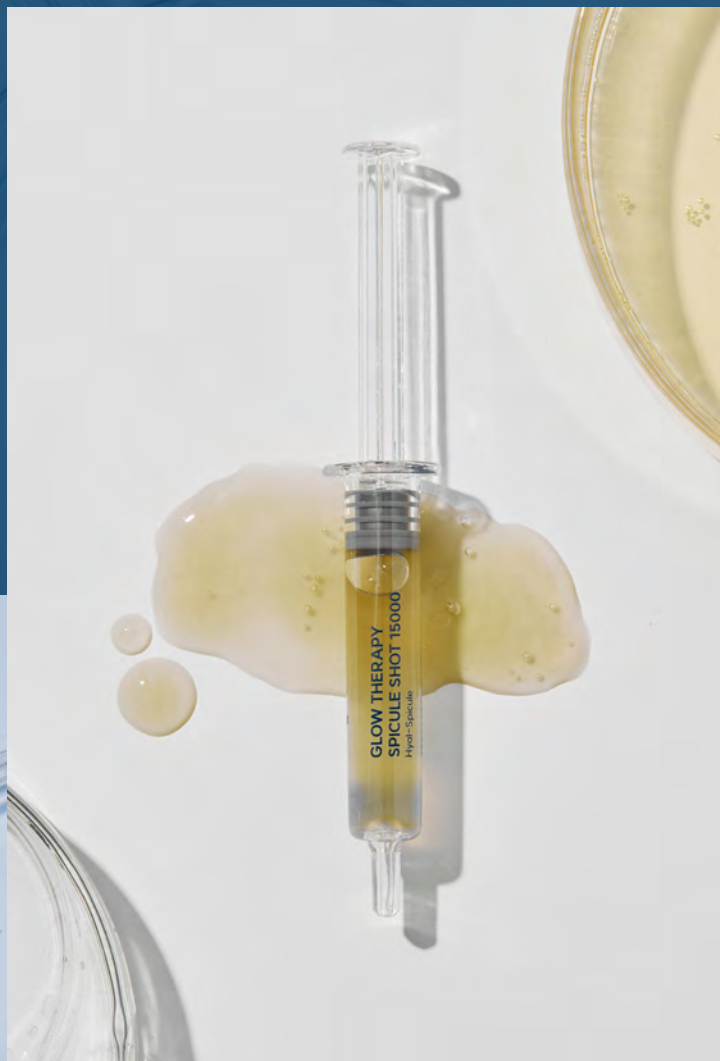
For home care

Glow Therapy Spicule Shot 15000

Hyal-Spicule

The ultimate spicule therapy that minimizes irritation while maximizing effects!

A multi-home care ampoule that addresses hydration, soothing, and elasticity concerns all at once.



True moisture-elasticity care with safer and more effective hyaluronic acid-coated spicules

Experience aesthetic skincare results at home. High-concentration spicules coated with low-molecular hyaluronic acid work safely on the skin while rapidly penetrating active ingredients, helping you experience moisture and elasticity from deep within. Try simple yet effective care with Glow Therapy Spicule Shot 15000.

ABOUT

Glow Therapy Spicule Shot 15000



Hyaluronic acid-coated spicules that minimize irritation while preserving effectiveness

Spicule therapy works by stimulating skin cell regeneration through micro-needle factors obtained from natural sponges. Glow Therapy's unique hyal-spicules are coated with low-molecular hyaluronic acid, minimizing skin irritation while deeply penetrating active ingredients, making it safe for all skin types.

Amazing boosting effects of turnover activation system

The key ingredient, hyal-spicule, is designed to be less than 200 μ m (micrometers) in length, avoiding unnecessary stimulation while effectively removing only unnecessary dead skin cells while preserving essential ones, promoting effective skin regeneration. It simultaneously creates an environment for rapid absorption of active ingredients, enhancing skincare effectiveness.

Enhanced synergy with antioxidant glutathione!

Contains glutathione, a key ingredient in Glutanex skincare renowned for its natural skin brightening properties, offering skin tone improvement benefits. Glutathione inhibits melanin pigment formation that causes dark spots and blemishes, brightening dull skin tone and smoothing rough skin texture.

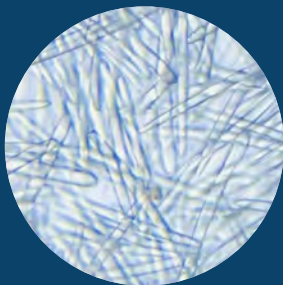
Key Points



POINT 1.

Hyal-spicule

Micro-needles coated with low-molecular hyaluronic acid not only penetrate safely into the skin but are also designed with uniformly curved tips to minimize skin irritation. Additionally, designed for deep moisturizing ingredient penetration, delivering hydration thoroughly to the skin's depths.



POINT 2.

Hydrolyzed Sponge / High-concentration Spicules

Glow Therapy Spicule Shot 15000 contains 15,000ppm of safe and effective hyal-spicules. A single ampoule helps achieve aesthetic-level care at home.



POINT 3.

3-step Hydrolysis Technology

As hyal-spicules safely remove dead skin cells, the space is filled with healthy moisture from hydrolyzed plant extracts (pansy, gardenia, malt). Glutanex's unique 3-step moisturizing system cultivates moisturized and firm skin from within.

Ingredients



Glutathione

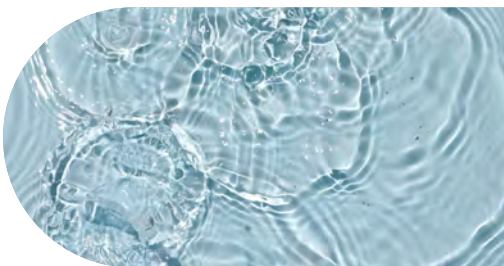
Most powerful antioxidant that brightens and rejuvenates.



Cica Complex (Centella Complex)

It contains an 8-Cica Complex, featuring eight effective Cica ingredients that excel in wound healing and skin antibacterial effects, helping to quickly soothe irritated skin.

Centella Asiatica Leaf Extract, Centella Asiatica Root Extract, Pinus Pinaster Bark Extract, Centella Asiatica Extract, Madecassic Acid, Asiaticoside, Asiatic Acid, Madecassoside



Hyaluronic Acid

Care for moist skin by increasing the fundamental moisture in the skin. Pulls moisture from inside the skin toward the surface and continuously supplies moisture to the epidermis.



Sodium DNA (PDRN)

Provides moisture and promotes skin regeneration, and PDRN delivers potent anti-aging benefits.

Advanced Technology

Hyal Spicule

Spicules – Do They Hurt the Skin?

Clearing Up Misunderstandings About Spicules That May Feel Like a Sting

Reduce Irritation	Revitalize the Skin	Maximize Results
Spicules with a length of less than 200µm that do not trigger irritants within the skin	Activates skin turnover by removing unnecessary dead skin cells without dissolving the skin.	Provides skin regeneration and hydration much more effectively than regular cosmetics, without disrupting the outer layer of the skin.

*Side effects occur only when spicules penetrate to a depth of more than 250µm into the dermis.



- Irregularities and Sediment Formation
- Sharp ends can cause a tingling sensation ▲
- Penetration of Active Ingredients ✕



- Uniform Shape, Minimal Sediment Formation
- Curved Ends Reduce Irritation ▼
- Coats Active Ingredients for Direct Penetration into the Skin ○

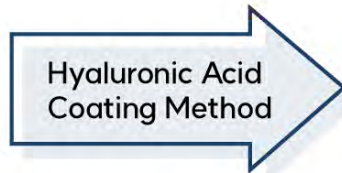
Ingredients



Hyal Spicule



Microneedles



Hyaluronic Acid Coated Microneedles

Hyaluronic acid-coated spicules penetrate deeply into the skin, promoting exfoliation and skin regeneration with minimal irritation.



Rest assured!

Due to the formulation characteristics that cause fundamental changes, you may feel a slight tingling sensation during use, but this is a natural phenomenon that occurs as the ampoule is absorbed into the skin.

Clinical Studies

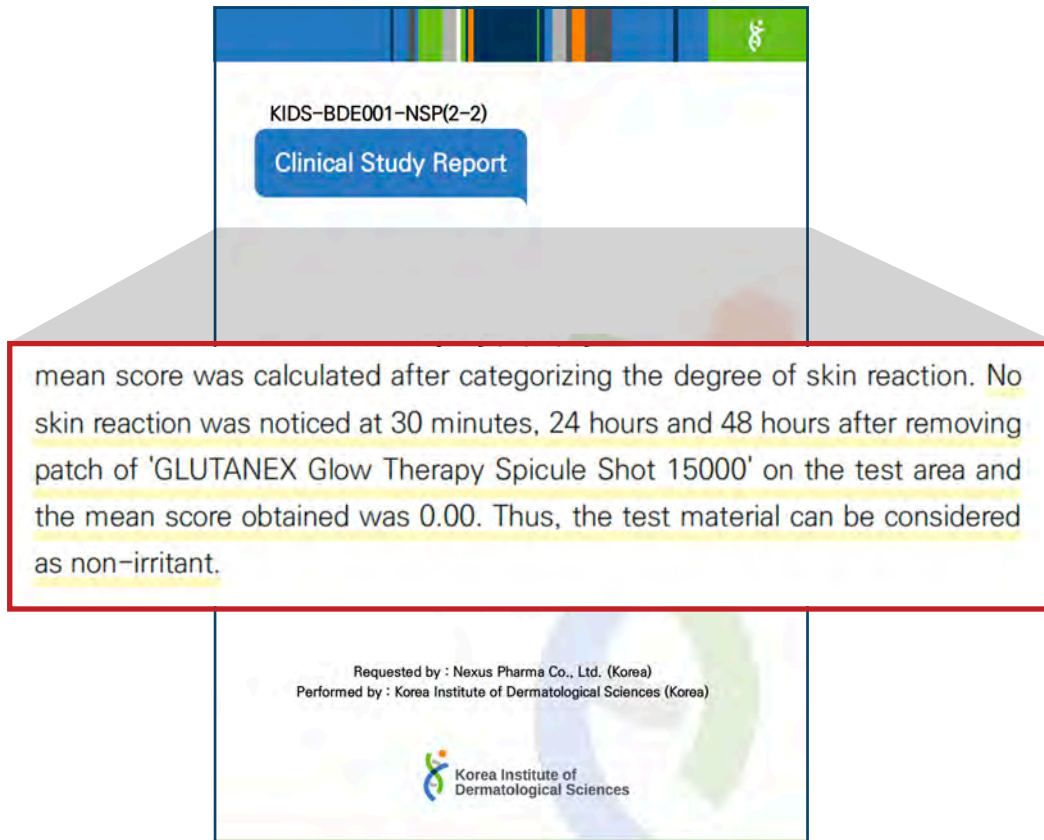
Experience powerful aesthetic-grade skin texture care effects with just **one ampoule**



[Dermatologist Tested]
0.00 Zero Irritation
Suitable for sensitive skin



Low Irritation Test



Efficacy Test (Results)

1. The evaluation results of mitigation of melasma and pigmentation using ANTERA 3D

Improvement rate (%)

1.27

After 2 weeks

2. The evaluation results of skin texture using ANTERA 3D

Improvement rate (%)

13.63

After 1 time use

3. The evaluation results of exfoliation (flaky skin) using Video Microscope and Image Analyzing Program

Improvement rate (%)

93.94

After 1 time use

4. Subjects' abnormal skin responses were not detected during the trial period.

Results

In the study requested by Nexus Pharma Co., Ltd., 'GLUTANEX Glow Therapy Spicule Shot 15000' was found to be helpful with mitigating melasma and pigmentation, improvement of skin texture, and exfoliation (flaky skin).

Clinical Studies 1

Evaluation of the reduction in spots and pigmentation before and after using the test substance

The experimental results indicate that, compared to before use, there was a statistically significant reduction ($p < .01$) in spots and pigmentation at the application site after two weeks of using the test substance, suggesting that the test substance helps in reducing spots and pigmentation (Tables 2-4, Figure 4).

Table 2. Changes in Melanin Values (N=21)

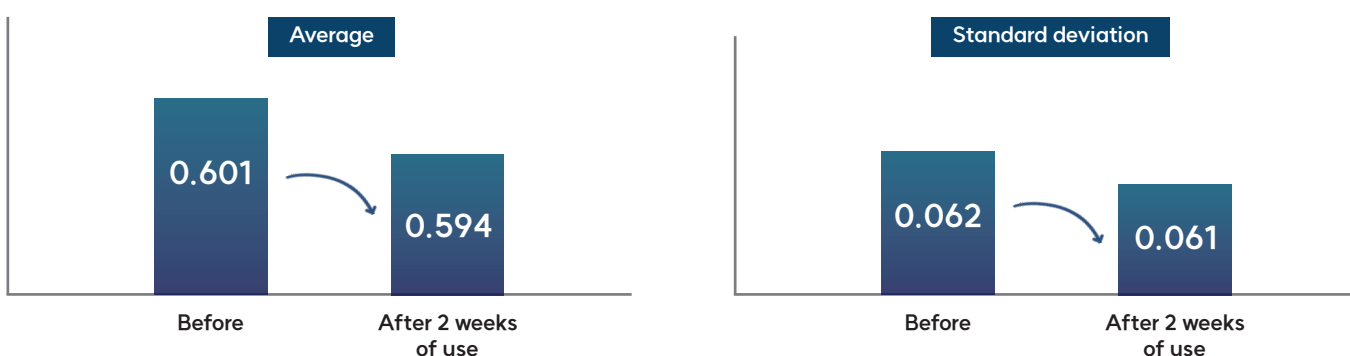


Table 3. Improvement Rate of Melanin Values (%)

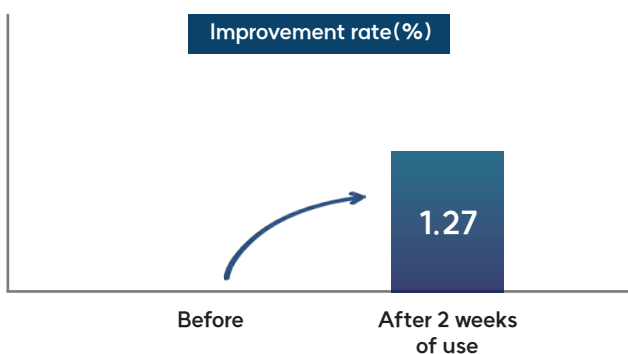


Table 4. Statistical Analysis of Melanin Values

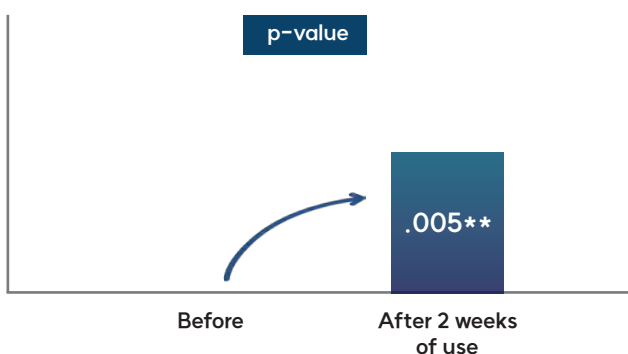
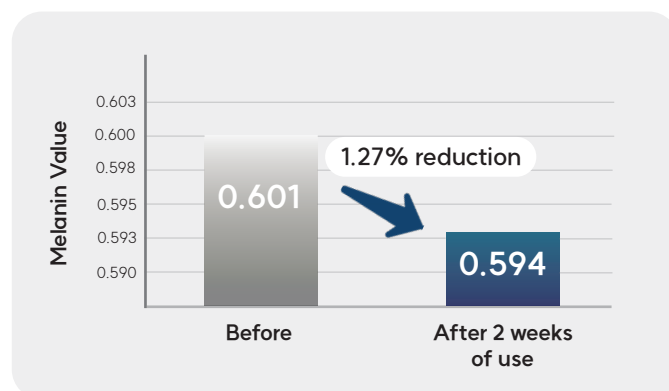


Figure 4. Changes in Melanin Values and Improvement Rate (%)



*p < .05 **p < .01 ***p < .001; p-value is measured by paired t-test

Results

1. The evaluation results of mitigation of melasma and pigmentation using ANTERA 3D

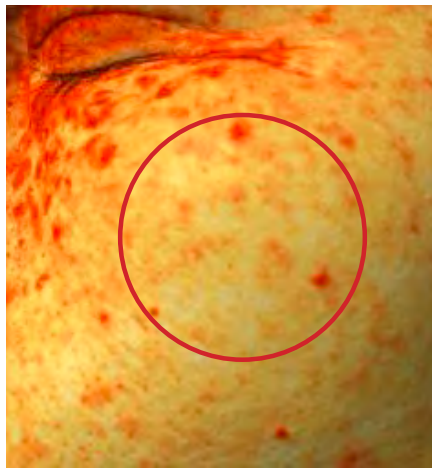
Improvement rate (%)

1.27

After 2 weeks

TEST SUBJECT 8

Reduction
of spots and
pigmentation



Before



After 2 weeks of use

TEST SUBJECT 12

Reduction
of spots and
pigmentation



Before



After 2 weeks of use

Clinical Studies 2

Evaluation of skin texture improvement before and after using the test substance

The experimental results indicate that, compared to before use, there was a statistically significant reduction ($p < .001$) in skin texture at the application site immediately after one-time use of the test substance, suggesting that the test substance aids in improving skin texture (Tables 5~7, Figure 5).

Table 5. Changes in Texture Small Values (N=21)

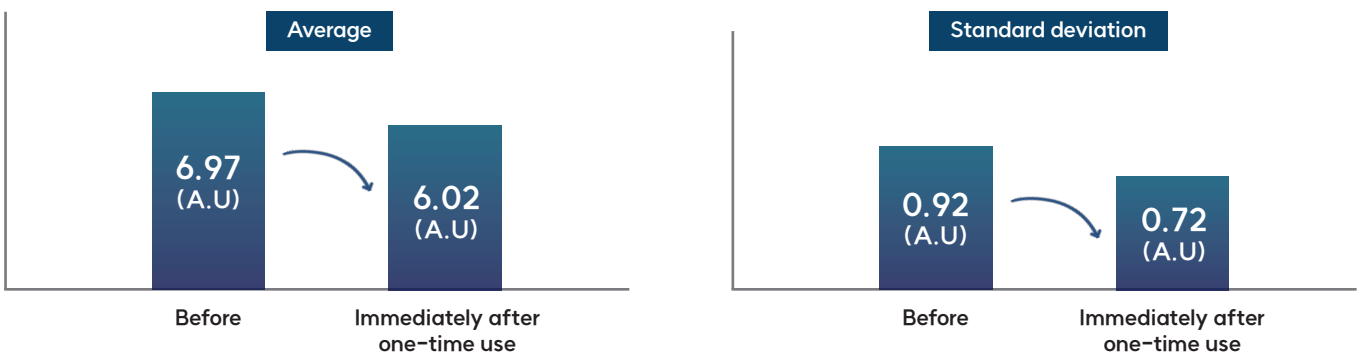


Table 6. Improvement Rate of Texture Small Values (%)

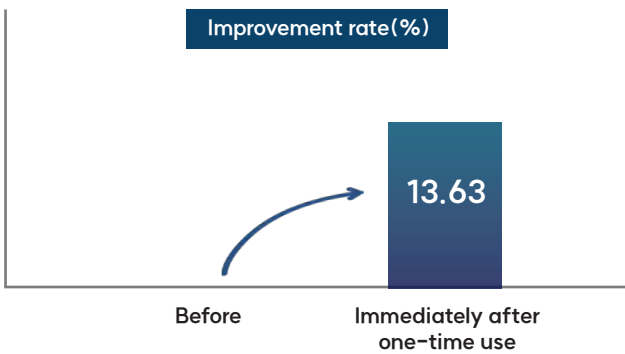


Table 7. Statistical Analysis of Texture Small Values

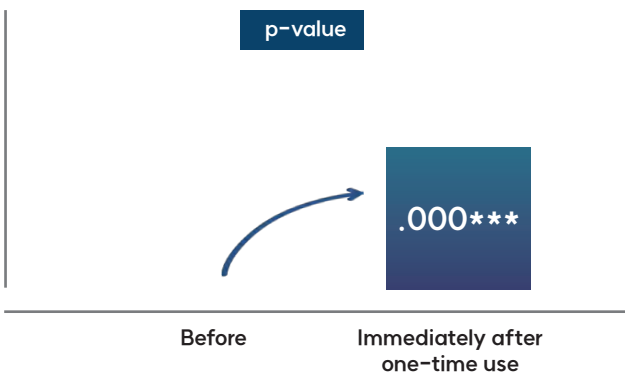
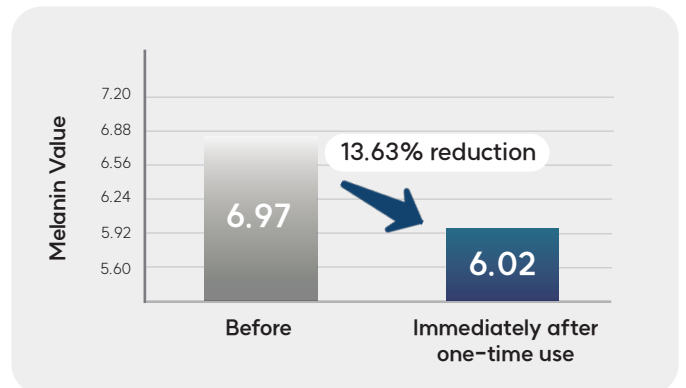


Figure 5. Changes in Texture Small Values and Improvement Rate (%)



*p < .05 **p < .01 ***p < .001: p-value is measured by paired t-test

Results

2. The evaluation results of skin texture using ANTERA 3D

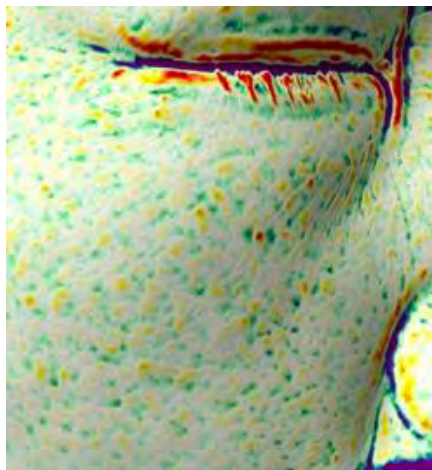
Improvement rate (%)

13.63

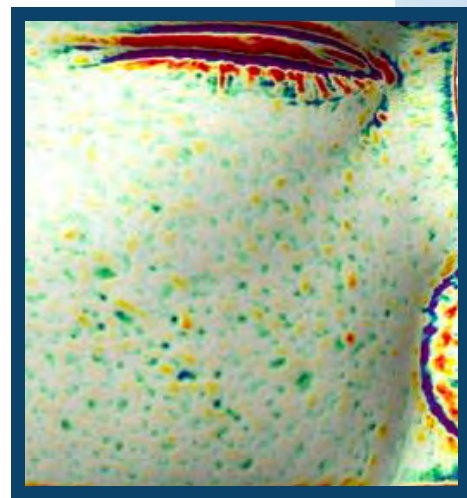
After 1 time use

TEST SUBJECT 1

Improvement
of skin texture



Before



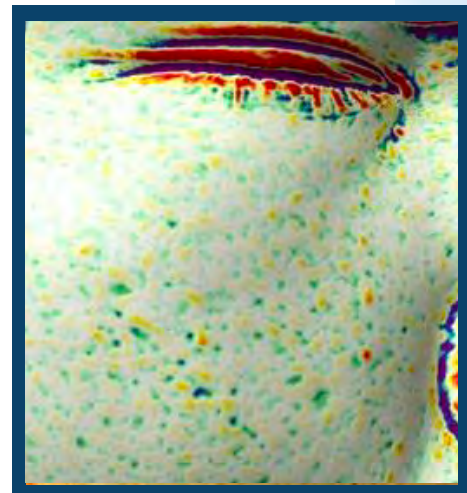
Immediately after one use

TEST SUBJECT 3

Improvement
of skin texture



Before



Immediately after one use

Clinical Studies 3

Evaluation of exfoliation improvement before and after using the test substance

The experimental results indicate that, compared to before use, there was a statistically significant reduction ($p < .001$) in exfoliation at the application site immediately after one-time use of the test substance, suggesting that the test substance aids in improving exfoliation (Tables 8~10, Figure 6).

Table 8. Changes in Skin Exfoliation (N=21)

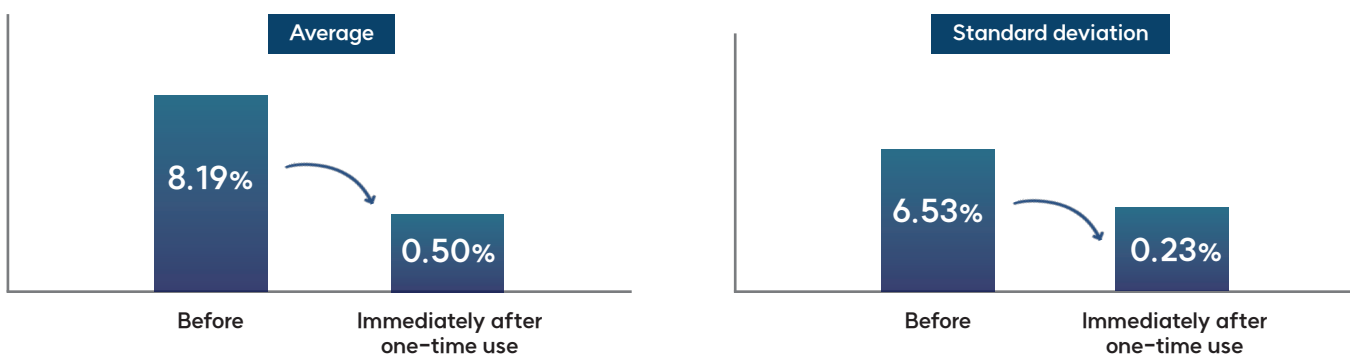


Table 9. Improvement Rate of Skin Exfoliation (%)

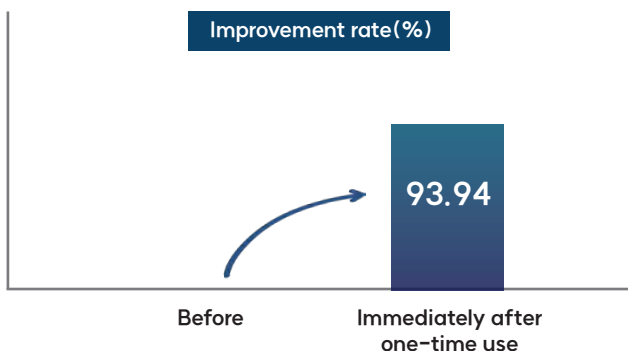
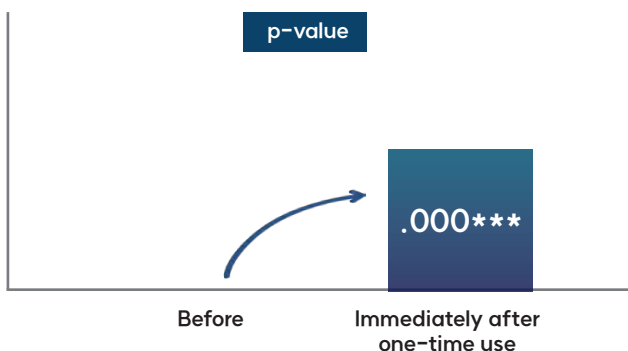
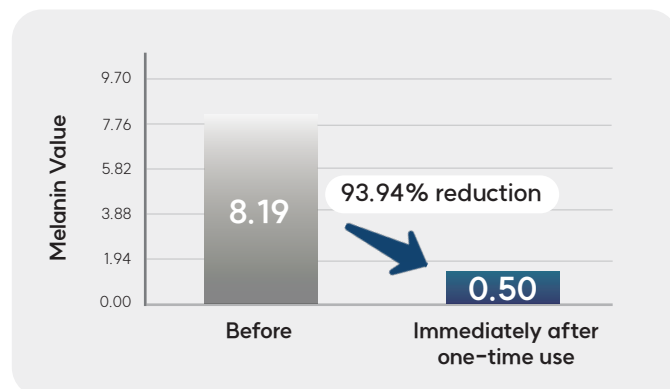


Table 10. Statistical Analysis of Skin Exfoliation



*p < .05 **p < .01 ***p < .001: p-value is measured by Wilcoxon signed-rank test

Figure 6. Changes in Skin Exfoliation and Improvement Rate (%)



Results

3. The evaluation results of exfoliation (flaky skin) using Video Microscope and Image Analyzing Program

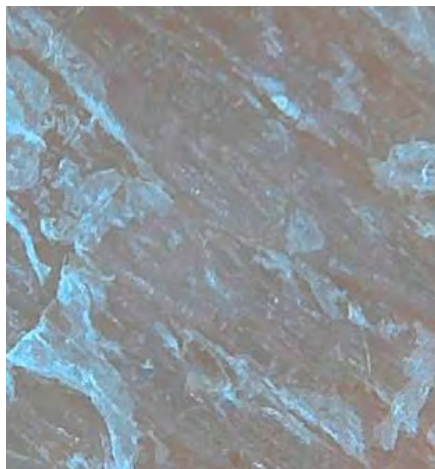
Improvement rate (%)

93.94

After 1 time use

TEST SUBJECT 1

Exfoliation
improvement



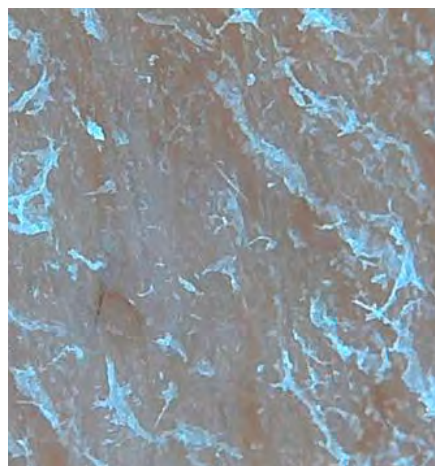
Before



Immediately after one use

TEST SUBJECT 5

Exfoliation
improvement



Before



Immediately after one use

How to Use



Step one.

After cleansing, use a toner to refine skin texture.



Step two.

Using the syringe-type ampoule container, slowly press from the end to apply Glow Therapy Spicule Shot 15000 directly to face.



Step three.

Spread evenly across face, then press with palms to absorb without rubbing.



Step four.

After absorption is complete, finish with moisturizing products.

TIPS

TIP!

Most effective when used 1-2 times per week before bedtime

Precautions for Use:

- Recommended a patch test for sensitive skin
- Avoid areas with thin skin such as around mouth and eyes as spicules (micro-needles) may cause tingling
- Recommend use 1-2 times per week; apply sunscreen when going out
- Not recommended for use with beauty devices

Better Together!

Glow Therapy Spicule Shot
15000



Glow Therapy Mask



Aqua Booster (Moisturizing) /
Aloe Booster (Soothing)



Q1 Is the tingling sensation during use normal?

Due to the formulation characteristics that cause fundamental changes, you may feel a tingling sensation during use, but this is a natural phenomenon that occurs as the ampoule is absorbed into the skin. Adjust amount and frequency according to individual needs, and ensure sufficient moisturizing care after use.

Q2 Can I use it during the day?

Night care is recommended, but if using during the day, be sure to apply sunscreen as the final step.

Q3 Will there be skin peeling?

As this is an absorbing ampoule, skin peeling should not occur. However, some skin types may experience minor peeling.

Q4 Can sensitive skin types use this product?

While the product has completed low-irritation skin testing and is suitable for sensitive skin, a patch test is recommended before use.

NOTE



GLUTANEX



For professional use

Glow Therapy Spicule Shot 50000

Hyal-Spicule

A clinic-exclusive ampoule that delivers fast and powerful effects for troubled skin by deeply penetrating with high-concentration spicule particles.



Premium care with more powerful and professional hyaluronic acid-coated spicules for intensive treatment.

Experience high-concentration, professional aesthetic/clinic-grade care. Ultra-high concentration spicules (50,000 ppm) coated with low-molecular hyaluronic acid penetrate deeply and safely into the skin, delivering active ingredients rapidly for instant hydration and elasticity.

This solution is versatile, offering care not only for the face but also for the body, effectively addressing elasticity, hydration, and skin troubles. For those seeking to elevate their skincare routine, Spicule Shot 50,000 is the ultimate solution.

Transform your skin with just one treatment using Glow Therapy Spicule Shot 50,000. Experience the change for yourself!

ABOUT

Glow Therapy Spicule Shot 50000



Minimized Irritation, Maximized Effect with Hyaluronic Acid Coating

Ultrafine microneedles extracted from natural sponges are coated with low-molecular hyaluronic acid to reduce skin irritation while maximizing efficacy. Spicule Shot 50,000 ppm delivers active ingredients deep into the skin, promoting professional-level care that helps the skin regenerate healthily on its own. With its high-concentration formula, it provides exceptional hydration and elasticity for both the face and body.

Powerful Boosting Effect with Turnover Activation System

Hyal Spicule at 50,000 ppm is designed with an ultrafine length of under 200 μ m, targeting and removing only unnecessary dead skin cells to promote skin turnover. At the same time, it creates an optimal environment for the rapid absorption of active ingredients, delivering clinic-level skincare results.

Premium Whitening Effect with Antioxidant Glutathione

The powerful antioxidant action of glutathione inhibits melanin production, brightening dull skin tones. Designed with a high-concentration formula, it can be applied to larger areas of the body, leaving your skin smooth, radiant, and full of vitality.

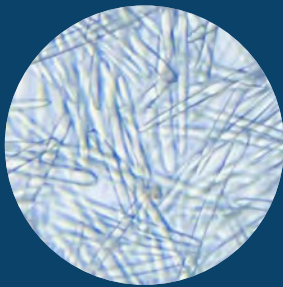
Key Points



POINT 1.

Hyal-spicule

Micro-needles coated with low-molecular hyaluronic acid not only penetrate safely into the skin but are also designed with uniformly curved tips to minimize skin irritation. Additionally, designed for deep moisturizing ingredient penetration, delivering hydration thoroughly to the skin's depths.



POINT 2.

Hydrolyzed Sponge / Ultra-High Concentration Spicules

Glow Therapy Spicule Shot 50,000 contains a high concentration of hyal spicules at 50,000 ppm. This ultra-high-concentration formula is designed for clinic and aesthetic use, making it suitable for both facial and body care.



POINT 3.

3-step Hydrolysis Technology

As hyal-spicules safely remove dead skin cells, the space is filled with healthy moisture from hydrolyzed plant extracts (pansy, gardenia, malt). Glutanex's unique 3-step moisturizing system cultivates moisturized and firm skin from within.

Ingredients



Glutathione

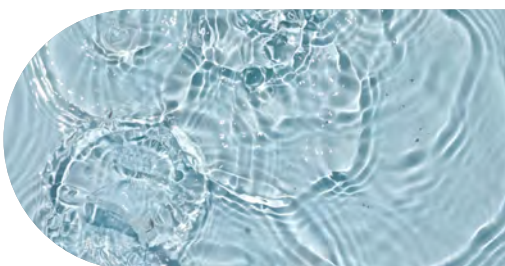
Most powerful antioxidant that brightens and rejuvenates.



Cica Complex (Centella Complex)

It contains an 8-Cica Complex, featuring eight effective Cica ingredients that excel in wound healing and skin antibacterial effects, helping to quickly soothe irritated skin.

Centella Asiatica Leaf Extract, Centella Asiatica Root Extract, Pinus Pinaster Bark Extract, Centella Asiatica Extract, Madecassic Acid, Asiaticoside, Asiatic Acid, Madecassoside



Hyaluronic Acid

Care for moist skin by increasing the fundamental moisture in the skin. Pulls moisture from inside the skin toward the surface and continuously supplies moisture to the epidermis.



Sodium DNA (PDRN)

Provides moisture and promotes skin regeneration, and PDRN delivers potent anti-aging benefits.

Advanced Technology

Hyal Spicule

Spicules – Do They Hurt the Skin?

Clearing Up Misunderstandings About Spicules That May Feel Like a Sting

Reduce Irritation

Spicules with a length of less than 200µm that do not trigger irritants within the skin

Revitalize the Skin

Activates skin turnover by removing unnecessary dead skin cells without dissolving the skin.

Maximize Results

Provides skin regeneration and hydration much more effectively than regular cosmetics, without disrupting the outer layer of the skin.

*Side effects occur only when spicules penetrate to a depth of more than 250µm into the dermis.



- Irregularities and Sediment Formation
- Sharp ends can cause a tingling sensation ▲
- Penetration of Active Ingredients X



- Uniform Shape, Minimal Sediment Formation
- Curved Ends Reduce Irritation ▼
- Coats Active Ingredients for Direct Penetration into the Skin O

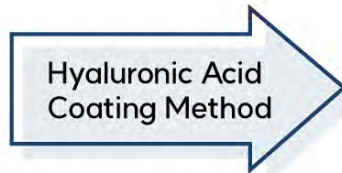
Ingredients



Hyal Spicule



Microneedles



Hyaluronic Acid Coated Microneedles

Hyaluronic acid-coated spicules penetrate deeply into the skin, promoting exfoliation and skin regeneration with minimal irritation.



Rest assured!

Due to the formulation characteristics that cause fundamental changes, you may feel a slight tingling sensation during use, but this is a natural phenomenon that occurs as the ampoule is absorbed into the skin.

Clinical Studies

Experience powerful aesthetic-grade skin texture care effects with just **one ampoule**



[Dermatologist Tested]
0.00 Zero Irritation
Suitable for sensitive skin



How to Use



Step one.

After preparing your skin with toner, take out the syringe-shaped ampoule container.



Step two.

Twist off the cap and gently press the syringe from the end to apply the product directly to your face and body.



Step three.

Spread evenly on your face and body, then press firmly without rubbing to ensure full absorption into the skin.



Step four.

After absorption is complete, finish with moisturizing products.



It's great not only for your face but also for use on your body if you're concerned about skin troubles.

Precautions for Use:

1. Since this product contains a high concentration of spicules, it is recommended to conduct a patch test on a small area before use.
2. Avoid using on thin skin areas such as around wounds, mouth, and eyes, as the spicules (micro-needles) may cause a stinging sensation.
3. Recommended to use once per 1-2 weeks, and apply sunscreen when going outside after using the ampoule.
4. Do not use in conjunction with beauty devices.

Better Together!



Glow Therapy Spicule Shot 50000



Cica Cream



Aqua Booster (Moisturizing)
Aloe Booster (Soothing)

Q&A

Q1 **Is the tingling sensation during use normal?**

Due to the formulation characteristics that cause fundamental changes, you may feel a tingling sensation during use, but this is a natural phenomenon that occurs as the ampoule is absorbed into the skin. Adjust amount and frequency according to individual needs, and ensure sufficient moisturizing care after use.

Q2 **What should you be careful of after the treatment?**

After the Spicule Shot treatment, the skin turnover process becomes more active, making the skin more sensitive to UV rays. Be sure to apply sunscreen.

Q3 **Will there be skin peeling?**

As this is an absorbing ampoule, skin peeling should not occur. However, some skin types may experience minor peeling.

Q4 **Can sensitive skin types use this product?**

While the product has completed low-irritation skin testing and is suitable for sensitive skin, a patch test is recommended before use.



GLUTANEX



 NEXUS PHARMA

www.nexus-pharma.com

CH BUILDING, 71, GONGHANGDAERO 45GIL
GANGSEOGU, SEOUL, KOREA
(T) +82 2 6406 2405
info@nexus-pharma.com